

MAGNAVOX

HDTV INDOOR DIGITAL ANTENNA

OWNER'S MANUAL

PLEASE READ BEFORE OPERATING THIS EQUIPMENT.

MODEL: MC323

LIMITED WARRANTY

Craig Electronics warrants this product to be free from manufacturing defects in material and workmanship under normal use for a period of 180 days from date of purchase. If service is required, please return the product to the store where it was purchased for exchange, or, pack the unit in the original packing material with all accessories if applicable, a copy of your sales receipt and a Cashier's check or Money Order for \$15 (to cover shipping and handling costs) payable to Craig Electronics Inc. For consumers in Canada, please make sure that the cashier check or money order is redeemable through a U.S. bank. Ship your product freight pre-paid. Your unit will be repaired, replaced or if the unit cannot be repaired or replaced, a refund will be forwarded to you within four weeks of receipt of your unit. Please ship your unit to:

Craig Electronics Inc.
1160 NW 163 Drive
Miami, FL 33169

This warranty is void if the product has been: a) Used in a commercial application or rental. b) Damaged through misuse, negligence, or abuse. c) Modified or repaired by anyone other than an authorized Craig service center. d) Damaged because it is improperly connected to any other equipment.

Note: This warranty does not cover: a) Ordinary adjustments as outlined in the Owner's Manual which can be performed by the customer. b) Damage to equipment not properly connected to the product. c) Any cost incurred in shipping the product for repair. d) Damage to the product not used in the USA.

This warranty is not transferable and only applies to the original purchase. Any implied warranties, including the warranty of merchantability, are limited in duration to the period of this expressed warranty and no warranty whether expressed or implied shall apply to the product thereafter.

Under no circumstance shall Craig be liable for any loss or consequential damage arising out of the use of this product. This warranty gives specific legal rights. However, you may have other rights which may vary from state to state. Some states do not allow limitations on implied warranties or exclusion of consequential damage. Therefore, these restrictions may not apply to you.

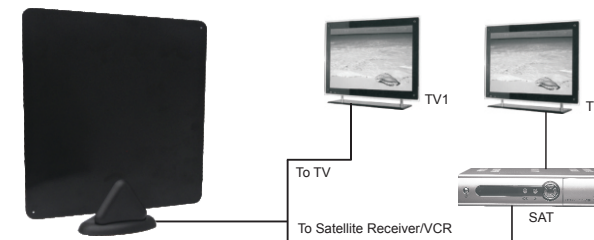
This product has been manufactured by and is sold under the responsibility of Craig Electronics Inc. and Craig Electronics Inc. is the warrantor in relation to this product. MAGNAVOX and SMART. VERY SMART are registered trademarks of Koninklijke Philips N.V. and are used under license from Koninklijke Philips N.V.

To Obtain Service on your Product
email: service@craigelectronics.com

Printed in China

MC323_WC_E0HS1_B0US

Connection

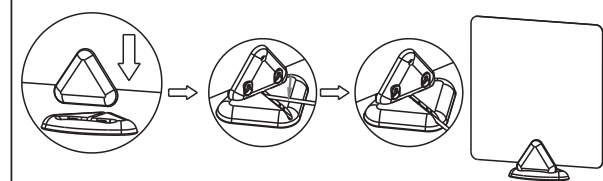


Part List

NO.	Name	Specification	QTY	Image
1	Antenna		1	
2	Plastic Stand		1	
3	Screw sleeve		2	
4	Screw	M3x20mm	2	
5	Hook & Loop Tape	Φ 30mm	2 (Sets)	
6	Cable Clip		1	
7	User's Manual		1	

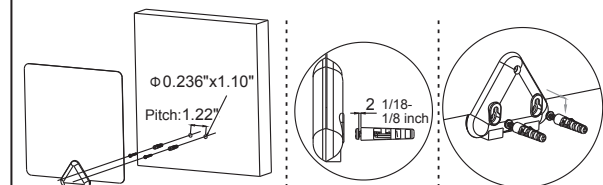
Installation diagram

Table Stand Setup



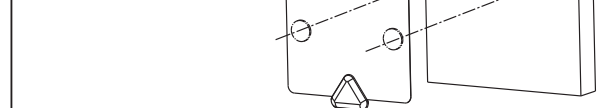
Wall Mount

1. Drill two $\Phi 0.236$ " depth 1.10" holes on the wall.
2. Insert the supplied sleeves into the holes.
3. Secure the supplied screws (x 2) into the sleeves and leave 1/16 - 1/8 inch space.
4. Connect the Antenna as illustrated below.



Adhesive Mount

1. Apply one-side of the supplied Hook & Eye tape on the rear of the Antenna.
2. Apply the other side to the desired location on the wall.
3. Connect the corresponding Hook & Eye sections as illustrated.



FAQs

Q1: Why can't I get any channels from the antenna?

A1.1: Please check to ensure that your TV is set to the correct mode (ANT), and has been properly set to scan for channels. Please refer to your TV's instruction manual for detailed instructions.

A1.2: Please remove any obstructions between your antenna and the signal source. Please try to reposition the antenna and rescan for the desired channels.

Q2: Why am I experiencing poor reception?

A2.: Please remove any obstructions between your antenna and the signal source. Please try to reposition the antenna and rescan for the desired channels. It may help to place the antenna in a higher position or close to a window.

Q3: Why can't I get the channel I am looking for? I know it is available in my area.

A3: There may be obstructions between the antenna and the broadcast tower of your desired channel. Please try to reposition the antenna and rescan for the desired channels. It may help to place the antenna in a higher position or close to a window.

Specifications

Frequency Coverage	VHF 174-230MHz UHF 470-862MHz
Impedance	75 Ω
Coaxial Cable Length	15 Feet

SPECIFICATIONS AND ACCESSORIES ARE SUBJECT TO CHANGE WITHOUT NOTICE

单页尺寸
90X120MM