

MAGNAVOX

OWNER'S MANUAL

18" DELUXE OSCILLATING PEDESTAL FAN WITH REMOTE

ITEM NO.: MG-MTSH011



110-120V 60Hz 65W



INTENDED USE:
This product is intended for indoor residential and office use only, not for industrial or other commercial applications. Use only with electrical wiring that is in good working order and that meets applicable codes and ordinances. If you have any questions whether your wiring is adequate, consult a qualified electrician.

While using your fan, you should follow the IMPORTANT INSTRUCTIONS listed below. As part of those instructions, we have used the word "WARNING" to indicate the level of hazard. "WARNING" indicates a hazard which, if not avoided, could result in injury or death.

IMPORTANT INSTRUCTIONS

As with all electrical appliances, basic safety precautions should always be followed to reduce the risk of electric shock, fire, or injury to persons, including the following precautions:

- Read all the instructions before using this fan.
- Use this fan only as described in this manual. Any other use not recommended by the manufacturer may cause electrical shock, fire or injury to persons.
- Do not operate the fan with a damaged power cord or after the fan malfunctions or has been dropped in any manner.
- Use of extreme caution is necessary when any fan is used by or near children, disabled persons or pets and whenever the fan is left operating unattended.
- Do not place the fan on a small, unlevel, uneven or any surface which might allow fan to tip or fall.
- For proper operation, fan should be placed on a smooth, non-combustible surface.
- Always unplug fan when not in use.
- Do not operate the fan with blade guards or any safety device removed.
- Avoid the use of extension cords due to risk of fire. If an extension cord must be used, the cord must be minimum 14 AWG and rated not less than 1875 watts.
- Do not run power cord under carpeting. Do not cover cord with throw rugs, runners or the like. Arrange cord away from traffic area where it will not be tripped over.
- Do not insert or allow any object to enter any openings on the fan. Doing so may cause electric shock and/or fire hazard.
- This appliance is not intended for use by persons (including children) with reduced physical, sensory or mental capabilities or lack of experience and knowledge, unless they have been given supervision or instruction concerning use of the appliance by a person responsible for their safety.
- Children should be supervised to ensure they do not play with the appliance.

WARNING: SHOCK HAZARD
Use your fan only in dry environments. This fan is not intended for use in a bathroom, laundry area, or similar locations, or near sinks, washing machines, swimming pools or other sources of water. Never locate fan where it may fall into a bathtub or other water receptacle. Do not use in damp environments such as flooded basements.

WARNING: HOT SURFACES
Do not touch fan motor when in use. This motor is hot when in use, to avoid burns, do not let bare skin touch hot surfaces.

WARNING: FIRE HAZARD
Fans have arcing or sparking parts inside. Do not use near combustible materials or flammable gases or sources of heat. DO NOT USE in areas where gasoline, paint or flammable materials are used or stored. To prevent a possible fire, do not block air intakes or exhaust in any manner. Do not insert or allow foreign objects to enter any ventilation or exhaust opening as this may cause an electric shock, fire, or damage the fan.

WARNING: ELECTRICAL SHOCK HAZARD
Do not use with damaged cord or plug. Use with adequate electrical system that is up to code.

CAUTION-TO PREVENT ELECTRIC SHOCK, this appliance has a three prong grounded plug that must be inserted into a matching properly grounded outlet to reduce the risk of electrical shock. Do not defeat this safety feature.

DO NOT operate any fan with a damaged cord or plug or where fan malfunctions, has been dropped or damaged in any manner. Do not operate fan with a broken blade, safety cage or any visual imperfections.

DO NOT run power cord under carpeting. DO NOT cover cord with throw rugs, runners or the like. Arrange cord away from traffic area where it will not be tripped over. Avoid the use of extension cords due to risk of fire. If an extension cord must be used, the cord must be minimum 14 AWG and rated not less than 1875 watts. Do not use an extension cord unless the plug can be completely inserted into its receptacle. Unplug the fan when not in use. Do not operate fan with its ventilation obstructed.

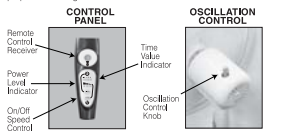
SAVE THESE INSTRUCTIONS



USAGE:
FAN OPERATION: Always operate the fan in the upright position following all instructions and recommendations listed in this manual.

FAN CONNECTION: Plug fan directly into 120 volt A.C., 60 Hz wall outlet. Be sure plug fits tightly in outlet. A loose connection may cause overheating and damage to the plug or fan. NOTE: To prevent overloading a circuit, do not plug the fan into a circuit that is serving other electrical needs.

FAN LOCATION: Place the fan in the area of the room that will provide proper fan cooling.



TURNING FAN ON/OFF: Place fan on stable level surface. Plug fan into proper grounded outlet. To start the fan, press POWER button () repeatedly to desired fan speed: High, Med., Low (). Press POWER again and cycle through fan speeds to "OFF" position to discontinue use. Unplug fan when not in use.

OSCILLATION: To start fan oscillation, press Oscillation Control Knob (located above motor housing) down. To stop oscillation function pull Oscillation Control Knob up while the fan is in any oscillation position.

REMOTE CONTROL: Place 2 ea. AAA size batteries (not included) in the remote control. Use the buttons on the remote as you would with the control panel. Point the remote control towards the control panel for the sensor to receive a signal.

TIMER FEATURE: The timer function is designed to work using oscillation or any fan speed. With a fan speed chosen press the TIME button on the control panel or remote control. Each time the TIME button is pressed additional time duration lights illuminate. Simply add the value of the lights and it is your set time. To turn the timer function off, press the TIME button continuously until all the lights are off.

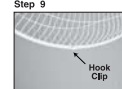
FAN ASSEMBLY: Simple assembly is required.



Step 1 Place Pedestal Pole into Socket of the fan base as shown.



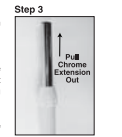
Step 2 With Base upside down, thread Base screw through Base into Pedestal Pole. Tighten securely.



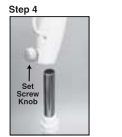
Step 3 Attach Front Grille to Rear Grille with Hook (C) centered on the bottom of the grille and logo upright.



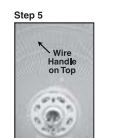
Step 4 Press remaining Grille Clips onto Rear Grille to securely attach Front Grille. Do not operate fan without Grille in place.



Step 3 Pull Chrome Extension Out



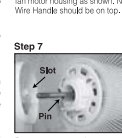
Step 4 Take Fan Motor Housing and insert it into Extension Pole and tighten Set Screw Knob.



Step 5 With thumbscrew loosened, pull Wire Handle on Top.



Step 6 Thread Locknut onto Motor Housing to lock Rear Grille in place.



Step 7 Remove any protective covering over shaft before Fan Blade installation. Place Fan Blade onto Motor Shaft. Notice the pin on Motor Shaft should fit into slots of Fan Blade.



Step 8 Thread Blade Cap onto threaded end of Motor Shaft. Note: Threads are reversed. Tighten = Counter-clockwise.

CARE AND MAINTENANCE

CLEANING: CAUTION-Before cleaning the fan be sure to disconnect power cord from the plug. Clean the grill surface with a clean damp cloth. Do not use harsh chemical or abrasive cleaners. DO NOT IMMERSER THE FAN OR ANY WIRES IN WATER. Return front grill before fan use. Allow fan to dry completely before use. Periodic grill cleaning with a vacuum cleaner will prevent dust build up. The motor is sealed and does not require any interior maintenance, cleaning or lubrication.

MAINTENANCE: The internal motor bearings are permanently lubricated at the factory and do not require any additional lubrication.

REPAIR: DO NOT OPERATE THE FAN WITHOUT THE GRILL IN PLACE. DO NOT USE THE FAN IF IT HAS MALFUNCTIONED OR BECOME DAMAGED IN ANY WAY.

STORAGE: Keep original carton for storage of the fan. Coil and tie the power cord to avoid damage during storage.

CUSTOMER ASSISTANCE
FOR IMMEDIATE CUSTOMER SERVICE, CALL: 1-855-463-3518
A CUSTOMER SERVICE REPRESENTATIVE WILL ASSIST YOU WITH ANY QUESTIONS REGARDING YOUR FAN. www.magnavox.com

MAGNAVOX and SMART. VERY SMART are registered trademarks of Koninklijke Philips N.V. and are used under license from Koninklijke Philips N.V.

Made in China
Distributed by:
OSO, Baltimore, MD

FUSE REPLACEMENT:

1. Grasp plug and remove from the receptacle or other outlet device. Do not unplug by pulling on cord.
2. Open fuse cover. Slide open fuse access cover on top of attachment plug towards blades. (see fig.1)
3. Remove fuse carefully. Remove the fuse by prying it out carefully. (see fig.2)
4. Risk of fire. Replace fuse only with identical 2.5 or 5 Amp, 125 Volt fuse (3.6mm x 10mm).
5. Close fuse cover. Slide closed the fuse access cover on top of attachment plug. (see fig.3)
6. Risk of fire. Do not replace attachment plug. Contains a safety device (fuse) that should not be removed. Discard product if the attachment plug is damaged.

