

# MAGNAVOX

## OWNER'S MANUAL DIGITAL OIL FILLED RADIATOR HEATER WITH REMOTE CONTROL ITEM NO.: MG-MTOH907L



**120V ~ 60Hz 1500W**



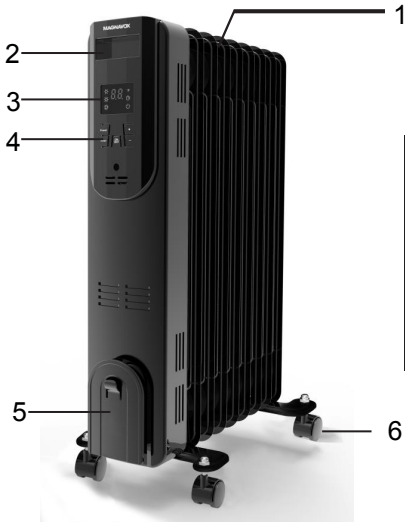
## IMPORTANT SAFETY INSTRUCTIONS



When using electrical appliances, follow basic safety precautions to reduce the risk of fire, electrical shock, personal injury and property damage. Read all safety precautions, and familiarize yourself with this manual prior to use.

**WARNING:** Use your heater only as described in this manual. Any other use is not recommended by the manufacturer, and can cause fire, electrical shock, personal injury and property damage.

- Your heater is for INDOOR HOUSEHOLD USE ONLY. DO NOT use your heater outdoors, or for industrial or commercial purposes.
- DO NOT depend on the Power Control Switch as the sole means of disconnecting power from your heater. Disconnect the power cord from the electrical outlet when your heater is not in use, when changing locations, or prior to cleaning.
- Place your heater on a stable, level surface, and route the power cord away from traffic areas.
- Connect the power cord to an easily-accessible electrical outlet so that your heater can be disconnected immediately in the event of an emergency.
- Ensure that twelve inches of clearance exists around your heater to avoid obstructing intake and exhaust flow.
- For optimal operation and to avoid overloading a circuit, connect your heater to circuit that is not supplying power to other electrical appliances.
- DO NOT operate your heater near curtains, plants, window covers, or other loose objects; such objects can become lodged in your heater's moving components, and cause a fire.
- NEVER cover your heater or place your heater or its power cord under rugs, carpeting or similar objects, as fire can occur.
- Your heater is not intended for use in bathrooms, laundry areas or similar damp locations. Never place your heater where it may come in contact with water or other liquids.
- DO NOT use devices that would turn your heater on and off automatically, as the use of such devices can cause a fire.
- Avoid contact with moving parts. NEVER insert your fingers or other objects through your heater's grill.
- DO NOT immerse or expose your heater to any form of liquid.
- NEVER operate your heater near an open flame or in the presence of explosive or combustible gases or fumes, such as: gasoline, paint or other flammable liquids. Your heater has hot internal components, and components that can spark during normal operation.
- DO NOT expose your heater to excessive heat or humidity, as electrical component damage can occur.
- DO NOT pull on the power cord. Always grasp the plug when connecting and disconnecting the power cord from the electrical outlet.
- DO NOT use extension cords with your heater. Extension cords can overheat and cause a fire.
- DO NOT remove, replace, repair or tamper with the originally-supplied plug.
- NEVER attempt to open or service your heater. Doing so may cause personal injury or property damage. Should your heater or its power cord malfunction or become damaged, discontinue operation immediately and consult a qualified repair technician.
- Extreme caution is necessary when your heater is used near children, pets and invalids. Keep your heater out of the reach of children, pets and invalids to reduce the risk of personal injury and electrical shock.

## PARTS OF THE HEATER



DESCRIPTION	PART	QUANTITY
U-Shape Bolt & Wing Nut		2
U-Shape Bracket with Castor		2

## PARTS OF THE HEATER

1. Oil fins (x7)
2. Carry handle
3. Display
4. control panel
5. Power cord housing
6. Rolling casters

### DO NOT OPEN OR REFILL/CHANGE

### OIL FINS OIL FINS ARE PERMANENTLY

SEALED AND DO NOT REQUIRE

REFILLING OR OIL CHANGING.

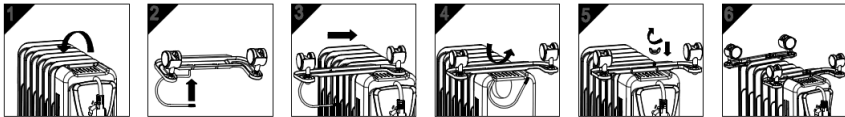
ATTEMPTING TO OPEN FINS WILL

DAMAGE THE UNIT. THIS UNIT IS FILLED

WITH A NON TOXIC MINERAL OIL.

### CAUTION:

DO NOT OPERATE THIS HEATER WITHOUT CASTERS ATTACHED



### Assembly Instructions:

- Unpack the heater and remove all parts from the packaging.

1. For ease of assembly, place the heater upside down or on its side on a soft surface which will not scratch the unit. Use one hand to hold it in place. (1)

2. Unscrew nut and put U-shape bolt in one hole of bracket. (2)

3. Attach the bracket onto the heater with the U bolts and wiring nuts supplied as shown in 3, 4, 5.

4. Assemble another castor with bracket same with 2, 3, 4, 5.

# Instructions

## Placement of the heater

1. Turn the heater upright. Ensure legs are correctly installed and level.
2. Place heater on a flat and stable surface. Setting the heater on an incline or decline may cause damage to the unit and create a hazardous situation.
3. Proceed to OPERATING INSTRUCTIONS.

## Pre-operation instructions

1. Carefully remove your heater from its shipping box.(The shipping box can be reused for off-season storage)
2. Place your heater on a firm, level surface.  
Completely uncoil the power cord, and connect your heater directly into a 120 Volt, grounded AC electrical outlet.

Note: The power cord has a polarized plug (with one blade wider than the other) that will only fit in a polarized outlet one way. If it does not insert easily try reversing the plug. If it still does not fit contact your electrician to replace your outlet. DO NOT defeat the safety purpose of the polarized plug.

**CAUTION:** TO PREVENT ELECTRIC SHOCK MATCH WIDE BLADE OF PLUG TO WIDE SLOT, FULLY INSERT

## The control panel symbols

- ☀️ Low Power Level (600W)
- ☀️ Medium Power Level (900W)
- ☀️ High Power Level (1500W)
- °F Heating Mode
- 🕒 Timer Mode
- 🔌 Power on




## Controls on product

- **ON/OFF** : press this button after plug in to power on the heater and start operation, or press it repeatedly to stop operation and set the heater into standby mode.
- **Power**: use this button to set the power level.
- **Timer**: use this button to set the timer.
- **[ + ]** and **[ - ]**: use these buttons when setting the desired temperature, or for

setting the timer.

### Controls on remote control

-  : press this button after plug in to power on the heater and start operation, or press it repeatedly to stop operation and set the heater into standby mode.
- **Power**: use this button to set the power level.
- **Timer**: use this button to set the timer.
- [ + ] and [ - ]: use these buttons when setting the desired temperature, or for setting the timer.



### Setting the temperature

The heater has a thermostat which enables you to set the temperature from 56°F to 86°F. Once a temperature has been set, the heater will remain on until the room temperature has reached the temperature on the digital display. The thermostat will then cycle on and off to maintain the set room temperature.

- Power on the heater, the display will show 88 and keep flashing. Press Power button to set the desired power level. The desired temperature 75°F and power level will be shown and flash on the screen.
- Use the [ + ] and [ - ] buttons to set the desired temperature, from 56°F to 86°F.
- While the heater is warming up the room, the heat level symbol will keep flashing on the display until the set temperature has been reached. The symbol will stop flashing then. The heater comes on again when the room temperature drops below the desired temperature.
- Use the [ + ] and [ - ] buttons to change the desired room temperature at any time.

### Setting the timer

When the heater is powered on. You can set the timer to switch off the appliance automatically after a certain period of time (1 to 24 hours from the time the function is set).

1. Power on the heater, the display will show 88 and keep flashing. Press Timer button to set the desired power off time. The display will show 00 and start flashing on the screen.
2. Use the [ + ] and [ - ] buttons to set the heater operation time (between 1 and 24 hours). The function will activate once the timer icon stops flashing.
3. The heater will cycle on and off as per the set temperature setting and discontinue operation when the set time has run out.

**Example:** It is now 4pm. The heater is on and you want it to shut off at 11pm automatically. Set the timer-off function to 7 hours: the heater will cycle on and off to maintain the set temperature. It will stop operating at 11pm and go into standby mode.

## **Clean and maintenance**

1. Turn the Power Control Switch to the 'OFF' position.
2. Disconnect the power cord from the electrical outlet.

**WARNING:** Do not expose the heating elements or switches to water, cleaning liquids or other chemicals, as fire, electrical shock, personal injury and property damage can occur.

**CAUTION:** Do not use gasoline, benzene or thinner to clean your heater, as these chemicals can cause surface damage.

1. Use a vacuum cleaner with a crevice tool to remove dust from the interior of your heater.
2. Use a clean, soft and lightly damp cloth to gently wipe the surface of the enclosure.
3. Allow the enclosure to dry completely prior to operating your heater.

## **Off-season storage instructions**

1. Secure the power cord, and place your heater in its original shipping container, or a similar container.
2. Store the container in a cool, dry location.

## **Safety features**

Your heater is equipped with a Tip-Over Safety Switch. When your heater tips over, it will turn off automatically.

Your heater is equipped with an Overheat Protection System. When the threshold temperature has been reached, your heater will turn off automatically.

To reset your heater when the Overheat Protection System has been activated, perform the following:

1. Turn the Power Control Switch to the 'OFF' position, and turn the Temperature Control Switch to the lowest setting.
2. Disconnect the power cord from the electrical outlet.
3. Allow your heater to cool down for approximately ten minutes.

4. Ensure that both the intake and the exhaust vents are clear of obstructions.
5. Connect the power cord to the electrical outlet.
6. Turn the Power Control Switch to the 'HIGH' position, and turn the Temperature Control Switch to the highest setting.
7. If your heater does not operate normally, turn the Power Control Switch to the 'OFF' position, disconnect the power cord from the electrical outlet, and consult an authorized repair technician.

## **Troubleshooting**

If your heater fails to operate, perform the following:

1. Review this manual to ensure that you understand the basic operations and features of your heater.
2. Check your household circuit breaker or fuse.
3. Check for obstructions at the intake and exhaust vents.
  - If obstructions are present, refer to the instructions for resetting your heater when the Overheat Protection System has been activated.
  - If no obstructions are present, and your heater still does not operate normally, switch off the heater, disconnect the power cord from the electrical outlet, and consult an authorized repair technician.

## **CUSTOMER ASSISTANCE**

**FOR IMMEDIATE CUSTOMER SERVICE, CALL: 1-855-463-3518**

**A CUSTOMER SERVICE REPRESENTATIVE WILL ASSIST YOU WITH ANY QUESTIONS REGARDING YOUR HEATER. [www.magnavox.com](http://www.magnavox.com)**

MAGNAVOX and SMART. VERY SMART are registered trademarks of Koninklijke Philips N.V. and are used under license from Koninklijke Philips N.V.

Made in China

Distributed by:

OBO, Baltimore, MD